

SCHEMATIC

FUNCTION:
2PNO OFF-(ON) + 2PNC ON-(OFF)

RATING:
2A 48VDC

ILLUMINATION VOLTAGE:
1.8V 20mA

CONTACT RESISTANCE:
Initial: 50mΩ Max. at 1A 12VDC

INSULATION RESISTANCE:
1,000MΩ Min. at 500VDC

DIELECTRIC STRENGTH:
2,000VAC Min. for 1 Minute

ELECTRICAL LIFE:
50,000 Cycles

MECHANICAL LIFE:
1,000,000 Cycles

TEMPERATURE:
Operating: -20°C to 70°C

INGRESS PROTECTION:
IP65

APPROVALS:
ROHS COMPLIANT

MARKING:
Nickel Plated Brass (H59)

MATERIALS:

BUSHING:
Stainless Steel (304)

BASE:
Polyamide 6/6 (PA66)

ACTUATOR:
Stainless Steel (304)
Polycarbonate (PC)

INNER ASSEMBLY:
Polyamide 6/6 (PA66)
Polycarbonate (PC)
Polyoxymethylene (POM)
Brass (H59)
Stainless Steel
Beryllium Copper

SEALING:
Silicone Rubber

CONTACTS:
Silver/Cadmium Oxide (AgCdO)

TERMINALS:
Brass

O-RINGS:
Silicone Rubber

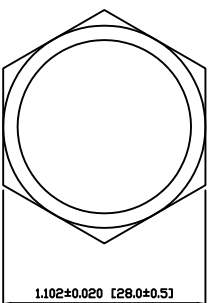
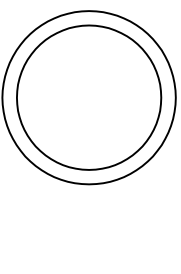
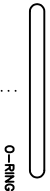
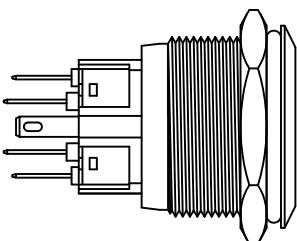
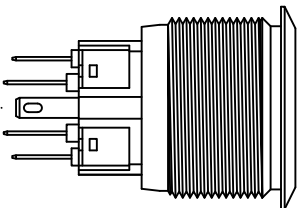
BEZEL:
Stainless Steel
Machine Finish

ACTUATOR:
Stainless Steel
Machine Finish

ILLUMINATION:
Red (Forward)
Red (Reverse)

COLORS AND FINISH

MARKING:
None



EXPLODED VIEW

ASSEMBLED VIEW

SUGGESTED PANEL CUTOUT

MAXIMUM PANEL THICKNESS: 0.394 [10.0mm]

REV.	DATE	BY	CHK
1	09/07/08	CAE	CAE
2	09/07/08	CAE	CAE
3	09/07/08	CAE	CAE
4	09/07/08	CAE	CAE

THE INFORMATION CONTAINED IN THIS DOCUMENT IS PROPRIETARY TO E-SWITCH AND IS NOT TO BE COPIED OR TRANSMITTED IN ANY FORM OR BY ANY MEANS, ELECTRONIC OR MECHANICAL, INCLUDING PHOTOCOPYING, RECORDING, OR BY ANY INFORMATION STORAGE AND RETRIEVAL SYSTEM.

INITIAL RELEASE DESCRIPTION

FOR DATE DRAWN BY

SCALE DRAWING NOT TO SCALE

PROJECTION

DRAWING NUMBER 52-PV8F2V0SS311

DATE AUGUST 5, 2009

REVISION A



PV8F2V0SS-311