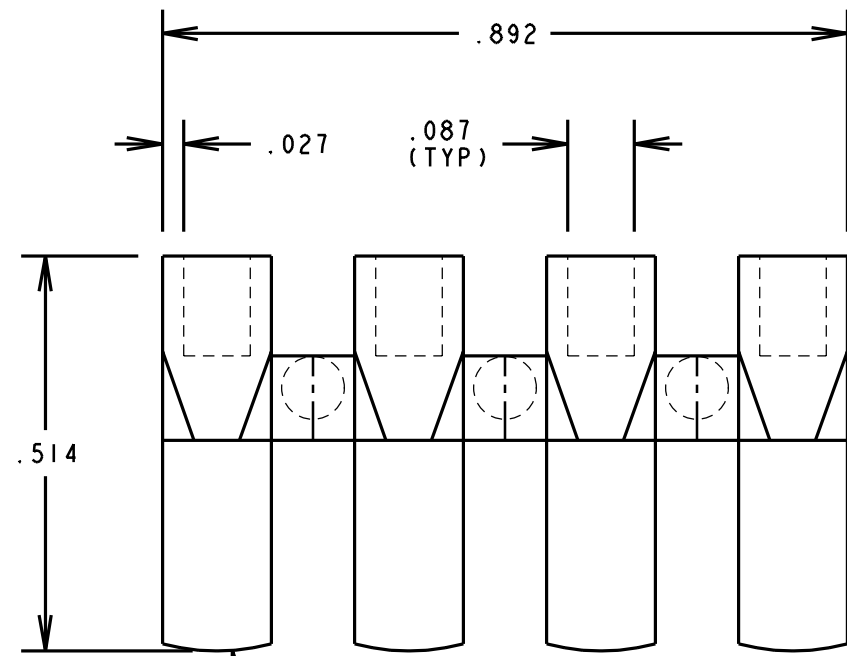
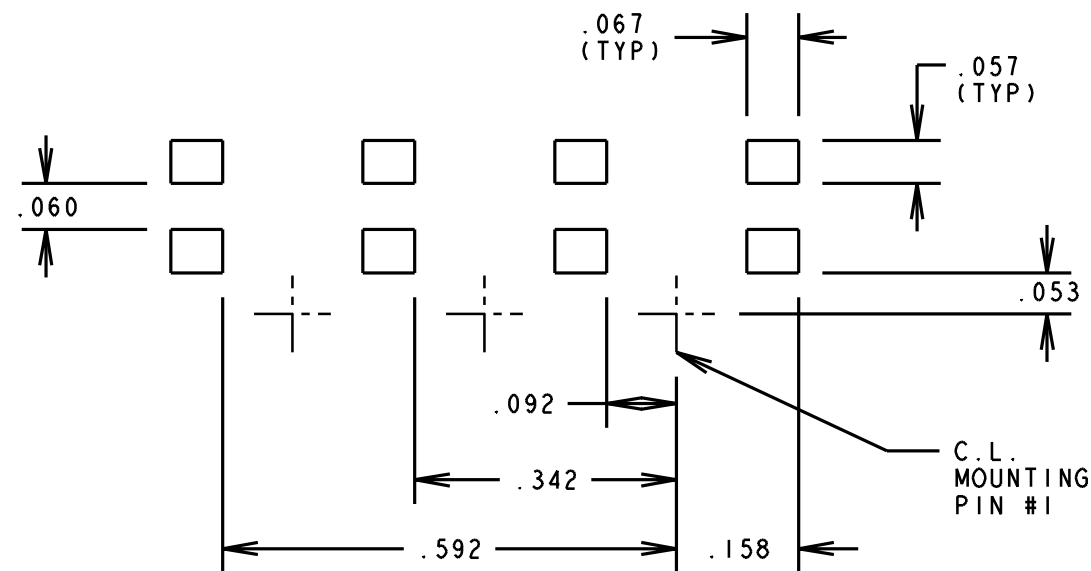


REV.	ECN NO.	REVISIONS	DRN.	CKD.	APP.	DATE
A	—	NEW RELEASE	MC		MC	12-8-93
B	—	DELETED RIBS ON CENTER PEG & DECREASED DIA. TO $\phi .068$, AND $\phi .140$ WAS $\phi .142$.	MC		MC	1-6-94
C	—	PUT RIB DETAIL BACK ON CTR PEG.	MC		MC	1-13-94
D	—	ADDED $+.005$ $-.007$ TO DIM $.125$.	MC		MC	4-26-94
E	—	$\phi .079 \pm .002$ WAS $\phi .079 \pm .001$.	MC		MC	5-6-94

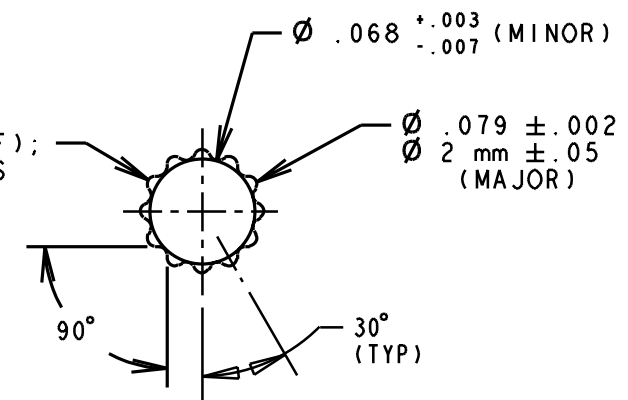


CHARMILLE #24 FINISH

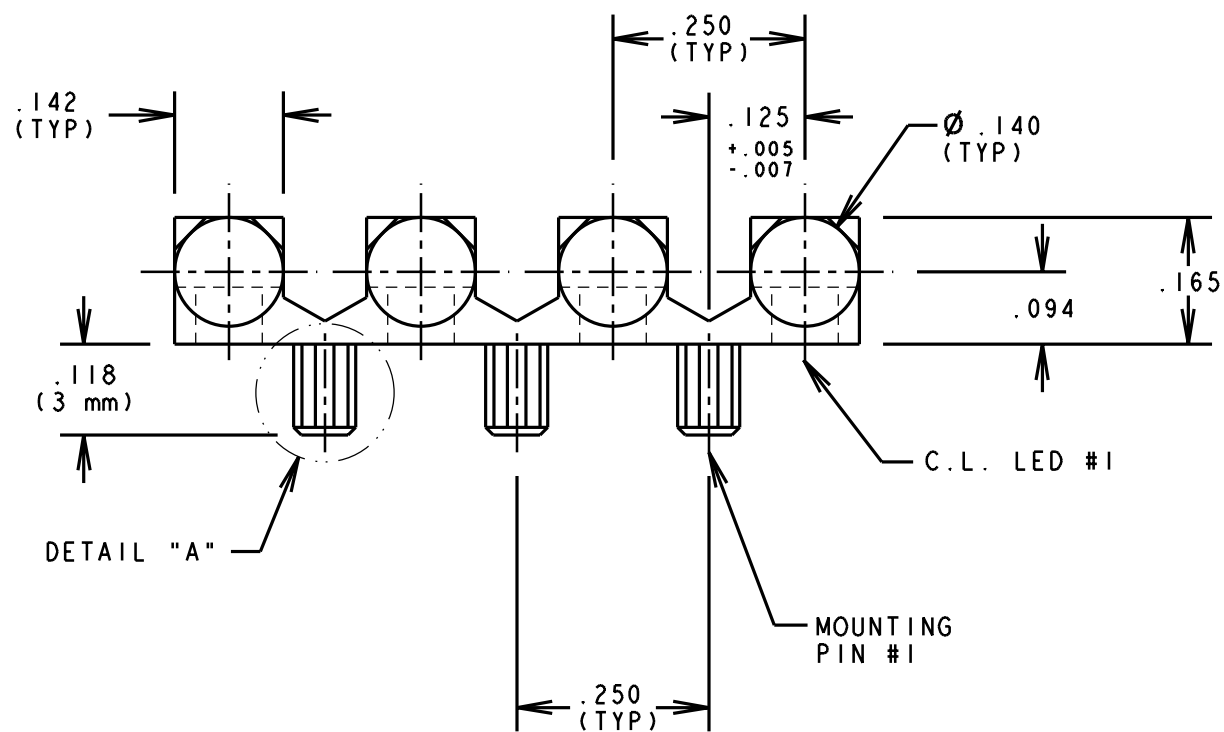


RECOMMENDED SOLDER PAD LAYOUT

R .005 (REF);
(12) PLACES

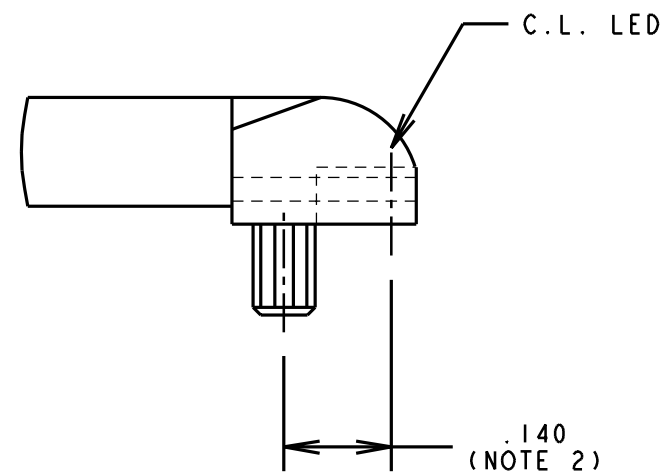


DETAIL "A"



C.L. LED #1

MOUNTING PIN #1



.140
(NOTE 2)

NOTES:

1. COMPONENT TO BE MOLDED IN A CLEAR TRANSMISSIVE POLYCARBONATE.
2. RECOMMENDED POSITION OF LED.
3. DIALIGHT PART NUMBER: 515-1020

THIS DRAWING AND THE CONTENTS HEREIN ARE CONFIDENTIAL AND THE SOLE PROPERTY OF DIALIGHT. REPRODUCTION OF THIS DRAWING OR CONSTRUCTION OF ANY PARTS WITHIN THIS DRAWING ARE FORBIDDEN WITHOUT THE WRITTEN CONSENT OF DIALIGHT.

SCALE 4:1	DRAWING NUMBER	REV
ALL DIM'S IN: INCHES	C-15829	E
TOLERANCES: UNLESS OTHERWISE SPECIFIED	TITLE LIGHTPIPE ARRAY	
FRACTIONS: $\pm 1/64$	MATERIAL	
DECIMALS (.XX): $\pm .01$	Dialight	
DECIMALS (.XXX): $\pm .005$	1913 ATLANTIC AVE. MANASQUAN, N.J. 08736	
ANGLES: $\pm 1^\circ$	SHEET OF FAMILY TABLE:	
FINISH:	FSCM 83330	