

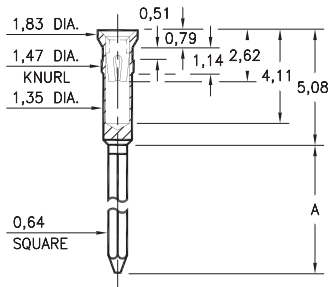
WRAPOST RECEPTACLES

FOR 0,38 - 0,64 DIAMETER PINS

0444

0444-X-17-XX-30-XX-02-0

Press-fit in 1,42 mounting hole

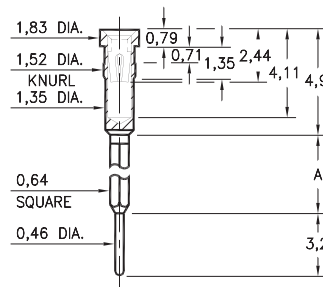


Basic Part Number	# of Wraps	Length A
0444-1	1	6,6
0444-2	2	9,4
0444-3	3	12,83

2601 ⇄ 2603

260X-0-17-XX-30-XX-02-0

Press-fit in 1,45 mounting hole

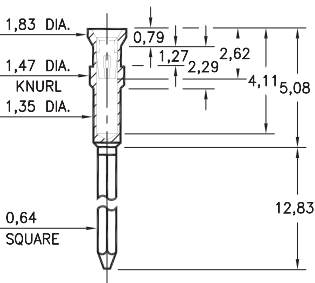


Basic Part Number	# of Wraps	Length A
2601-0	1	5,89
2602-0	2	8,89
2603-0	3	11,89

0445

0445-3-17-XX-30-XX-02-0

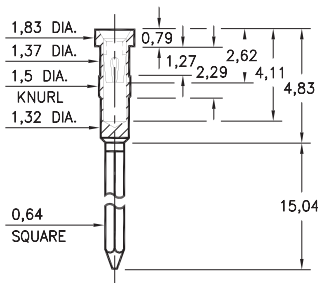
Press-fit in 1,42 mounting hole



1047

1047-3-17-XX-30-XX-02-0

Press-fit in 1,42 mounting hole



SPECIFICATIONS:

Shell Material: Brass Alloy 360, 1/2 Hard

Contact Material: Beryllium Copper Alloy 172, HT

Dimensions: Millimeters

Tolerances On: Lengths: ± 0,13

Diameters: ± 0,051

Angles: ± 2°



ORDER CODE: XXXX - X - 17 - XX - 30 - XX - 02 - 0

BASIC PART #

SPECIFY SHELL FINISH:

- 01 5,08µm TIN/LEAD OVER NICKEL
- ◆ 80 5,08µm TIN OVER NICKEL (RoHS)
- ◆ 15 0,25µm GOLD OVER NICKEL (RoHS)

SPECIFY CONTACT FINISH:

- 02 2,54µm TIN/LEAD OVER NICKEL
- ◆ 84 2,54µm TIN OVER NICKEL (RoHS)
- ◆ 27 0,76µm GOLD OVER NICKEL (RoHS)

SELECT CONTACT:

#30 or #32 CONTACT (DATA ON PAGE 253)

(For alternate contact choices, see groups B and C on page 248)

